

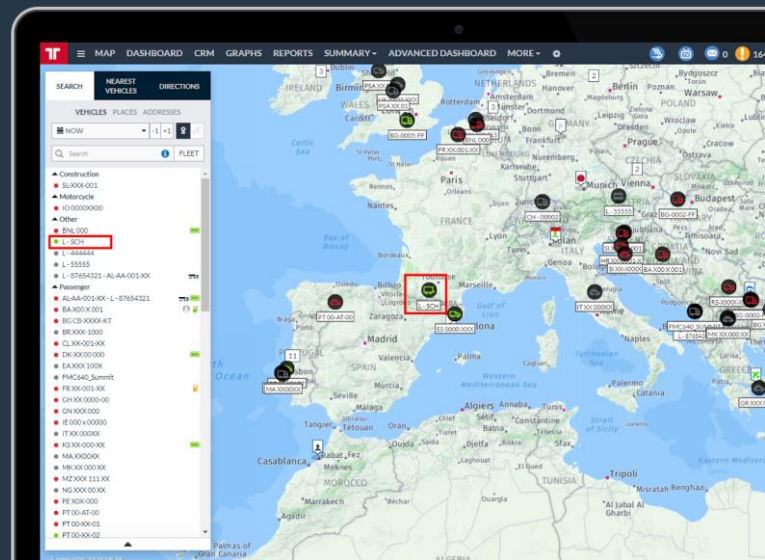
# Integration with Schmitz Cargobull

Manage all your vehicles and trailers on the same platform

Frotcom is partnering with Schmitz Cargobull for smarter fleet management, allowing you to manage all your vehicles and trailers in Frotcom with seamless data transfer and instant setup.

*You're managing a fleet including Schmitz Cargobull trailers along with other vehicles, monitoring and managing efficiently all the fleet in different platforms. That's challenging!*

*Now, you can access trailer data automatically and manage trailers and other vehicles all in Frotcom, and closely monitor in one single platform, real-time data on trailer locations and sensor readings, anticipate issues, optimize trailer usage, and improve overall operational efficiency.*



## How we help

Frotcom's integration with Schmitz Cargobull - Europe's leading manufacturer of semi-trailers and truck bodies - simplifies fleet management by consolidating trailer and vehicle data onto a single platform. Using familiar tools, you can monitor trailer locations, sensor readings, and critical metrics without additional hardware installations.

This integration provides real-time updates on trailer status, enabling proactive decision-making to enhance operational efficiency and safety.

Automating data access and providing smart alerts for anomalies like temperature variations or door status changes, Frotcom ensures timely interventions. This approach not only optimizes fleet operations but also supports strategic planning with detailed insights into trailer performance and usage.

Compatible with all trailer types, from reefers to curtain-siders, this integration offers versatile solutions tailored to meet diverse fleet management needs. The system provides comprehensive data, including weight, fuel level, tire pressures, and temperatures, ensuring you have all the necessary information to manage your fleet effectively.

## Benefits

### Unified fleet management platform

Manage all trailers and trucks on a single platform with Frotcom's advanced fleet management tools, including extensive alarms and reports, route management, ETA control, and coupling between trailers and trucks. Available for all types of trailers, from reefers to curtain-siders.

### Instant setup and availability

Avoid complex GPS tracker installations, saving on trailer downtime and installation costs. Trailer data is automatically transferred to Frotcom for immediate use.

### Comprehensive trailer data in Frotcom

Monitor cargo temperatures with official temperature logger calibrated sensors. Access additional data such as odometer readings, weight, tire pressure and temperature (TPMS), and fuel level (for reefers).

### Enhanced safety and operational efficiency

Ensure real-time monitoring of critical metrics like location, speed, temperature, and door status, enabling proactive interventions and optimizing fleet efficiency.

"The new integration of Schmitz Cargobull with Frotcom transformed the way we manage our fleet. We now have real-time and historical data at our fingertips, significantly improving our operational efficiency and customer trust. (...) The seamless integration and comprehensive data provided by Frotcom have exceeded our expectations."

Tomaž Šteblaj  
CEO of Transporti Jatis - Slovenia

## How it works

Frotcom's integration with Schmitz Cargobull leverages advanced telematics to efficiently transmit trailer data to Frotcom's platform, eliminating the need for additional hardware installations, and ensuring a smooth and efficient setup process.

### Data transmission and processing

Schmitz Cargobull trailers are equipped with telematics units that collect a wide range of data, including:

- License plate information
- Location (Latitude, Longitude)
- Position/Speed/Time (PVT)
- Timestamp
- Vehicle speed and heading
- Compartment temperatures
- Door status
- Manufacturer and model
- CANBus odometer
- Weight
- Temperature setpoints
- Fuel level (percentage and liters)
- Tire pressures and temperatures
- Battery voltage

This data is transmitted wirelessly to Frotcom's data center in real-time, utilizing secure communication protocols to ensure data integrity and privacy.

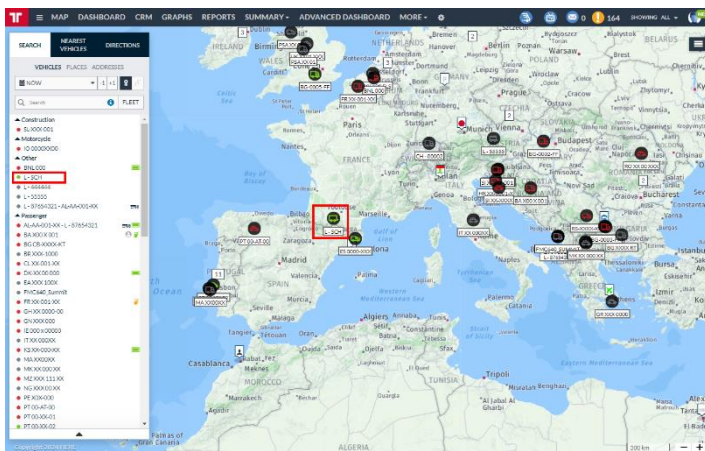
Once received, the data is integrated into Frotcom's fleet management software, where it is processed and made available to Frotcom users.

Frotcom's software continuously monitors the transmitted data. It generates real-time alerts for any out-of-bounds conditions, such as temperature deviations, door status changes, or abnormal tire pressures. These alerts are sent to designated users, enabling timely interventions.

The data collected allows you to make informed decisions. For example, monitoring weight and fuel levels can help optimize load management and fuel efficiency, while tire pressure and temperature data can prevent breakdowns and extend tire life.

The integration is compatible with all types of trailers, including reefers, curtain-siders, and more, providing a versatile solution for diverse fleet management needs. This ensures that regardless of your trailer type, you can benefit from the seamless integration and comprehensive monitoring capabilities provided by Frotcom and Schmitz Cargobull.

## Comprehensive trailer data in Frotcom



## Other related features you might be interested in

- GPS Vehicle tracking and sensor monitoring
- GPS trailer and asset tracking
- Fleet management reports
- Fleet alarms
- Fuel management
- Advanced dashboard
- Driving behavior analysis
- Driving times monitoring
- Remote tachograph download
- Workforce Management

THE INTELLIGENT  
FLEET MANAGEMENT  
FOR YOUR COMPANY.

WWW.FROT.COM

**FROT.COM**<sup>®</sup>  
INTELLIGENT FLEETS